

BOLT

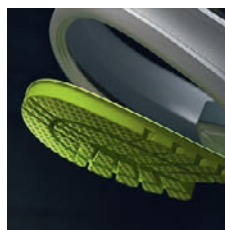
Women's Lace Up Safety Sneakers



DURASPRING
CUSHIONING FOR
LONG LASTING
MAXIMUM SUPPORT



LIGHTWEIGHT
PROTECTION OF
A CARBONMAX
SAFETY TOE



OUTSOLE TUNED FOR
SLIP RESISTANCE



SHOCK ABSORPTION
OF **WOLVERINE**
DURASHOCKS

SPECS & TECH

- Lightweight & Breathable stretch mesh upper.
- Moisture wicking mesh lining.
- Removable Wolverine DuraShocks® PU footbed.
- Dynamic Wolverine DuraSpring™ cushioning midsole resists compression for long-lasting comfort.
- Wolverine DuraShocks® dual suspension pads outsole.
- Nylon shank for extra strength.
- CarbonMax® composite toe caps.

SAFETY

ASTM F2413-18 M I/75 C/75 EH Rated composite toe caps.

COLOURS

Black

SIZES

5-10 US

ORDER CODE

W2391008